



compac

INTEGRATED REFUELLING SOLUTIONS

Installation and Setup Instructions

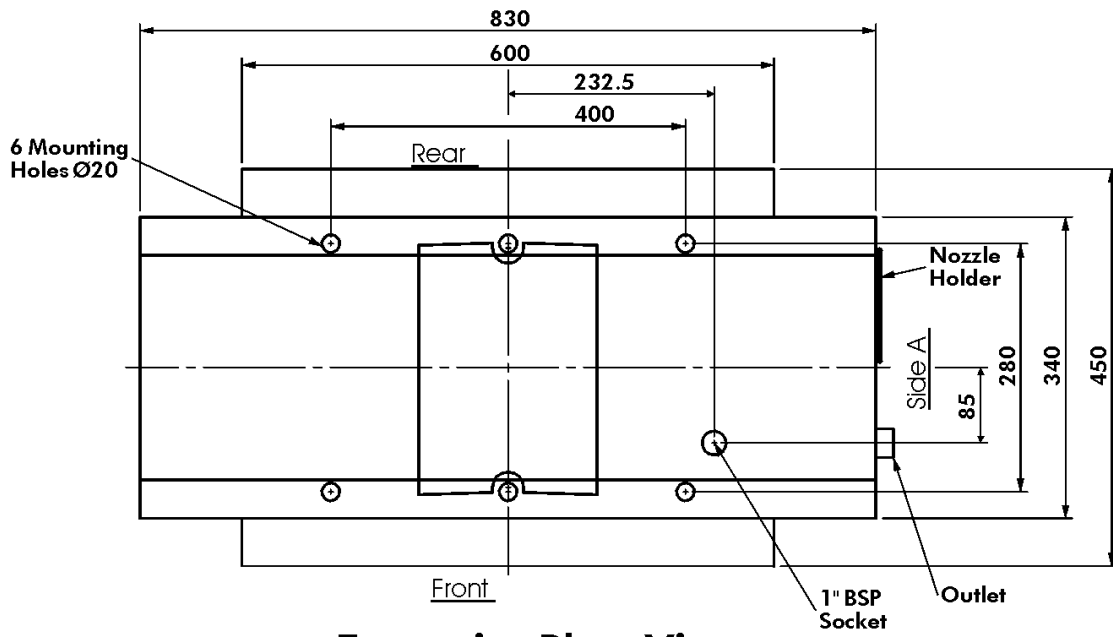
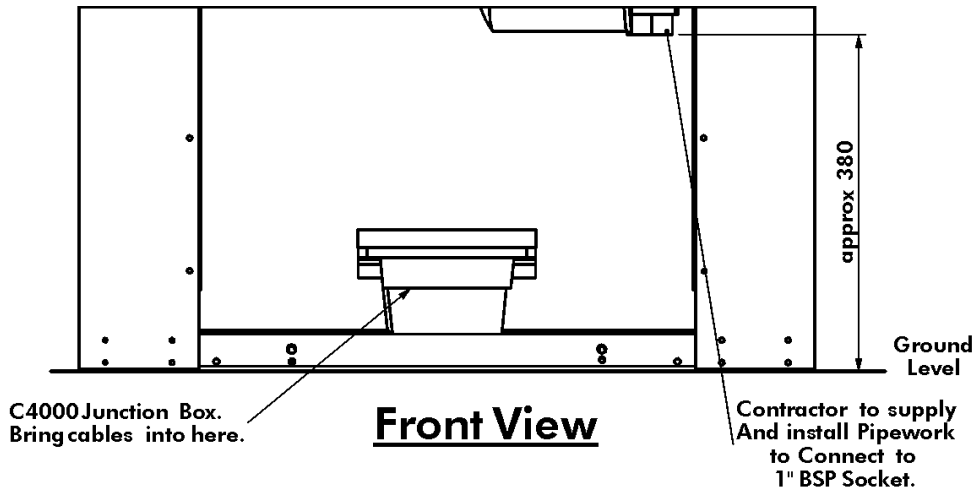
Model: Laser
Version: L80SV - Card King

Date of issue: 13 May, 2004

Compac Industries Ltd
P O Box 12-417
Penrose
Auckland
New Zealand
Ph 64 9 5792 094
Fax 64 9 5790 635
www.compac.co.nz

Footprint.....	3
2. Static Electricity Precautions.....	4
3. Pre-installation Check.....	4
4. Comms Dip-switch settings.....	4
5. Triac Dip-switches.....	4
6. Electrical Connections	5
6.1 Submersible Pump connection.....	5
7. Setting up the C4000	6
7.1 Configuration Code.....	6
7.2 Submersible Delay (Sd).....	6
7.3 Parameter Switch Settings	6
7.4 K-Factor Switch Settings	7
8. Calibration (K-Factor).....	8
8.1 Setting the K-Factor.....	8
8.2 Sealing the K-Factor switch.....	8
9. Futra Card King.....	9
9.1 Modem.....	9
9.2 Setup	9
10. Spare Fuses.....	9
11. Error Messages.....	10
12. L80SV Aviation Spare Parts	11

1. Footprint



Footprint Plan View

L40S L80S

2. Static Electricity Precautions

Electronic components used are sensitive to static. Please take anti-static precautions.

An anti-static wrist strap should be worn and connected correctly when working on any electronic equipment. If an anti-static wrist strap is unavailable, or in an emergency, hold onto an earthed part of the pump/dispenser frame whilst working on the equipment. This is not a recommended alternative to wearing an anti-static wrist strap.

Note: **Compac Industries Limited reserves the right to refuse to accept any circuit boards returned, if proper anti-static precautions have not been taken.**

3. Pre-installation Check

Once the pump is received on site, check that no damage has occurred while in transit – in particular, damage to electronics due to vibration or jarring. All terminals and plugs should be checked, including IC chips, to ensure they are securely in place.

4. Comms Dip-switch settings

(Dipswitch SW3)

1-OFF
2-ON
3-OFF
4-ON

These are factory set and should not be changed

Note they are opposite to the standard pump comms settings to enable the Futra Modem/Printer Interface

5. Triac Dip-switches

Important note:

Great care should be taken not to accidentally change the setting of these switches while working in the Flame-proof box. Operating the unit with these incorrectly set can result in damage to the C4000 Power Supply or incorrect operation of the triacs.

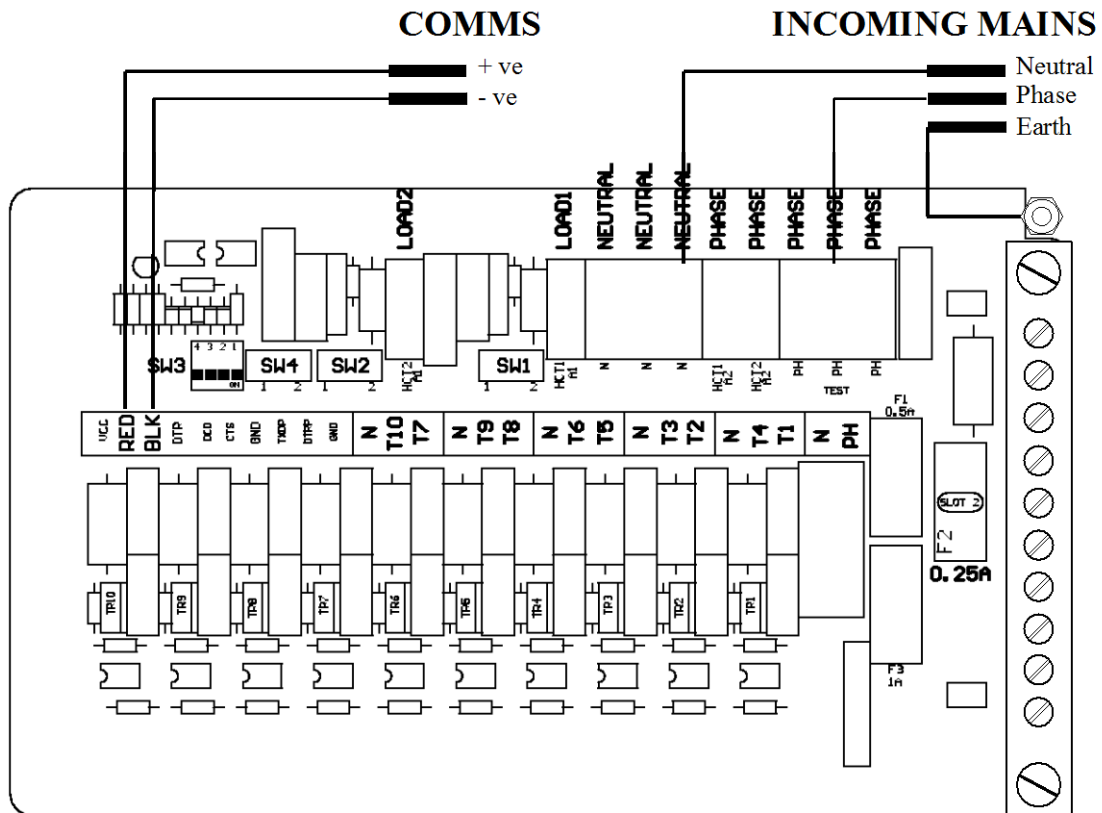
These switches are set in the factory and should not be changed.

If they are accidentally changed these are the correct settings for Laser Dispenser applications. Note: They are 3 position switches

	Dispenser (low current output)
SW1	2
SW2	2
SW4	2

6. Electrical Connections

Prior to pump installation ensure that there is at least a two-metre tail on both the incoming underground 230 volt cable and Comms cable. These cables are terminated at the C4000 Power Supply, which is housed in the Flameproof Enclosure located in the bottom of the pump, behind the Door. The incoming cables are terminated as shown in the following picture.



6.1 Submersible Pump connection

Single Dispensers

Connect the feed to the Submersible Pump Relay / Contactor to the terminal marked T1 on the C4000 Power Supply

Note: The terminals marked LOAD 1 & 2 are not used in Dispenser applications

7. Setting up the C4000

Once the pump is connected on site, the final setup check and calibration to complete the installation must be carried out, using the Parameter Switch and Calibration (K-Factor) Switch.

These switches are found on the C4000 Microprocessor Board which is housed in a metal enclosure located behind one of the inner column panels.

7.1 Configuration Code

The configuration code has been set at Compac and should not be changed. In the event of it being lost and having to be re-entered the configuration is written on the yellow label on the C4000 processor board cover.

7.2 Submersible Delay (Sd)

This is the time delay from when the Submersible pump starts to when the solenoids in the dispenser open to allow time for the leak detector to reset.

This is factory set by Compac at 005 (five seconds).

If problems are experienced with the leak detector tripping, firstly check that 'Sd' is still set and then, if necessary, make it longer as follows.

1. Press and release the K factor switch repeatedly until 'Sd' appears on the Dollar display.
'dXXX' will appear in the litres display.
2. Continue to press the K factor switch until the number to be changed flashes. Hold the switch down and this number will then increment.
3. Release the switch when the required number is displayed. The value of the displayed number will then be stored in the C4000 memory as the Submersible delay.

7.3 Parameter Switch Settings

7.3.1 Setting the Pump Number

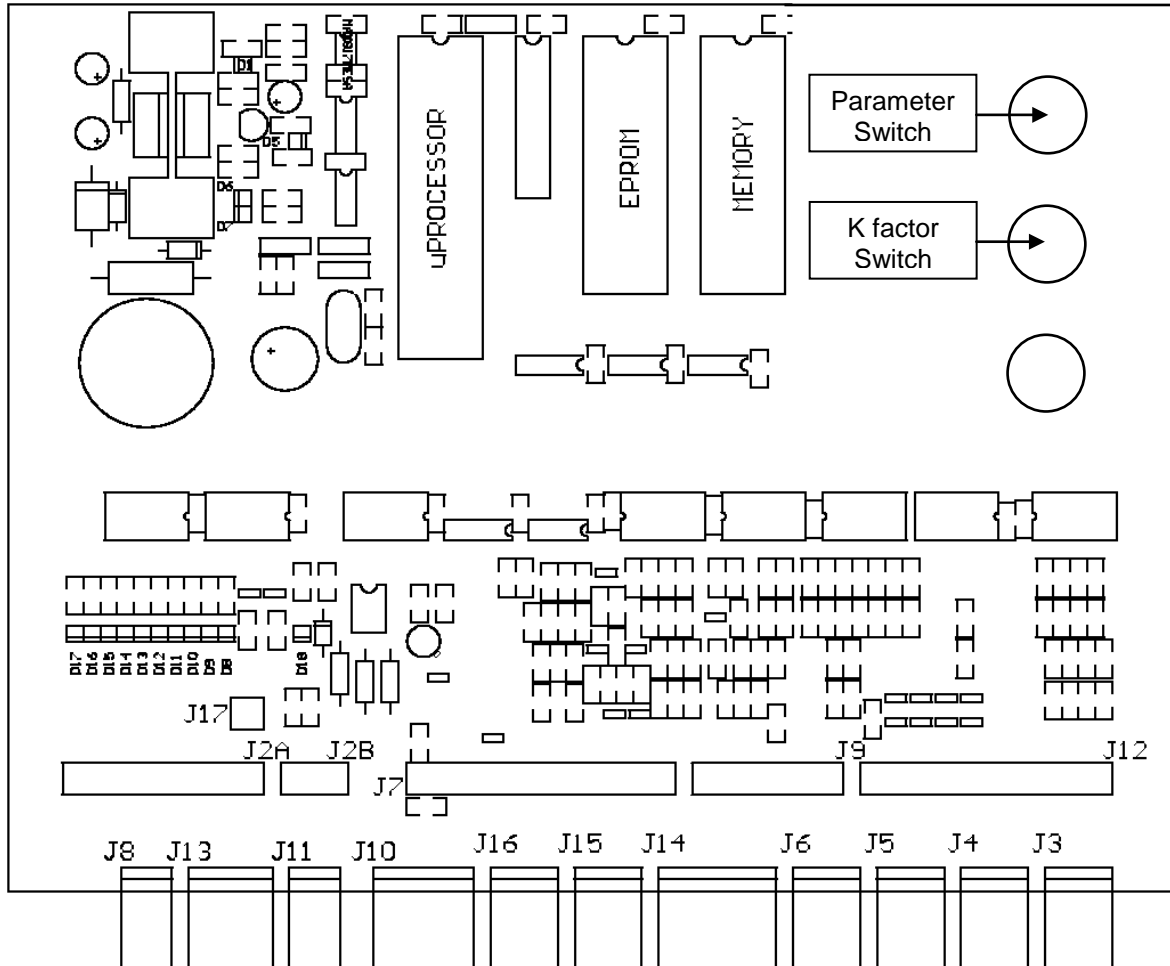
Depress the Parameter Switch nine (9) or more times until the message '**Pn XX**' appears in the litres display window. To alter the pump number, press and hold the Parameter Switch when the pump number to be altered appears on the display. This number will then increment. The switch should be released when the desired pump number is displayed. The value of the displayed number will then be stored in the C4000 memory as the pump number.

7.3.2 Setting the Price

This is setup in the Futra via the PINPad. Refer to Card King Futra section.

7.4 K-Factor Switch Settings

K-Factor, and other various configuration settings, are set via this switch. The position of the K-Factor switch is shown in the diagram below:



J1: Comms Test	J7: Displays	J13: Not used
J2: To Power Supply	J8: Temperature (for Temperature compensation only)	J14: Not used
J3 : Input from KG Meter Side A	J 9 Power for KG Meters	J15: Not used
J4: Input from KG Meter Side B	J10: Totes	J16: Not used
J5 : Not Used	J11: Buzzer	J17 Backlighting
J6 Not used	J12 Nozzle Switches	

8. Calibration (K-Factor)

8.1 Setting the K-Factor

K-Factor is a proportional calibration factor of litres dispensed per revolution of the meter.

To calibrate the dispenser/pump, dispense fuel into a certified measuring container, and compare the display value with the amount dispensed.

Example:

Display shows 10.00

True volume 20.00

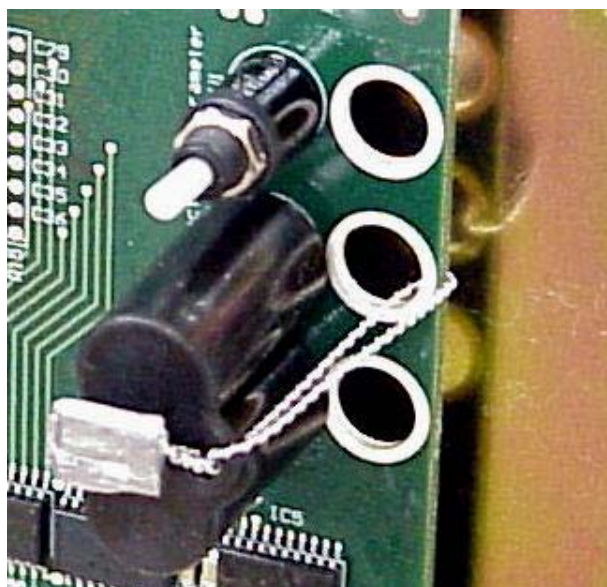
To calculate the correct 'K' Factor from the information above; firstly record the existing 'K' Factor.

$$\begin{aligned}\text{New 'K' Factor} &= \text{Existing 'K' Factor} \times \frac{\text{Dispensed Amount}}{\text{Displayed Amount}} \\ &= \text{Existing 'K' Factor} \times \frac{20.00}{10.00} \\ &= \text{Existing 'K' Factor} \times 2\end{aligned}$$

Change the existing 'K' Factor to this new value.

8.2 Sealing the K-Factor switch

After calibration the K-factor switch should be sealed as shown



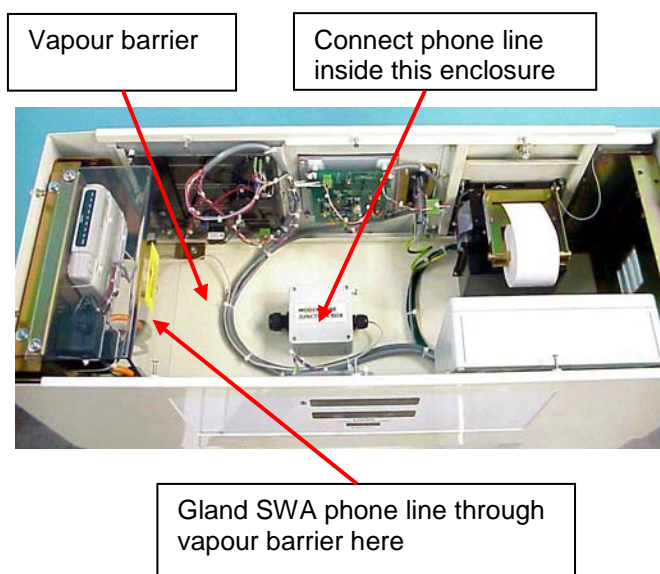
9. Futra Card King

9.1 Modem

Gland the SWA cable from the phone line through the vapour barrier and connect to the cable inside the plastic box

Notes

1. To maintain separation, connection to the phone line must be made within the plastic junction box.
2. No open holes are permitted in the vapour barrier



Inside view of cabinet from above

9.2 Setup

Refer to the Futra supplement manual for detailed instructions for Controller functions via the PINPad eg Product, Price, Cards etc.
If part of a Netbase system this should be done remotely via the modem

The factory Futra setup is Passcode 000000 Site # 1
These may need to be changed to enable the Futra to be dialed up. Refer to the system supervisor

Note The C4000 has been setup in the factory and should not be changed

10. Spare Fuses

In the event of a fuse blowing on the C4000 Power supply a bag of 3 is included in each flameproof box. Any fuses used from this bag should be replaced

Note: There are three different ratings used. If replacing a fuse, ensure that the correct value is used.

11. Error Messages

Error Code	Fault	Action
Err 3	No price or pump number set.	Set the pump number or: Set a price at the pump or at the controller.
Err 7	Excess flow.	Max Flowrate exceeded
Err 8	Excess reverse rotation of encoder.	Check product is not flowing back into the tank once the delivery has finished.
Err 9	Faulty or disconnected meter encoder.	1. Check that encoder is plugged in. 2. Replace encoder PCB on meter
Err 10	Configuration Lost	Reconfigure C4000 refer to C4000 manual
Err 12	C4000 memory failure.	Change memory IC. F-AD-DS1225 (not applicable to Futra)
Ped Abd	Display error	1. Check display cable for loose wires/crimps 2. Replace display PCB

12. L80SV Aviation Spare Parts

Card reader
F-BA-CDRD-MT-TTL

Retail display (includes backlighting)
F-CP-DISPLAY-GD1

Tote
F-BA-TOTE-A-K

C4000 Microprocessor Board
F-CP-C4PROCES-A

COM50 Flowmeter
(complete)
F-METER-COM50

COM50 Flowmeter
(electronics only)
F-METER-COM-E

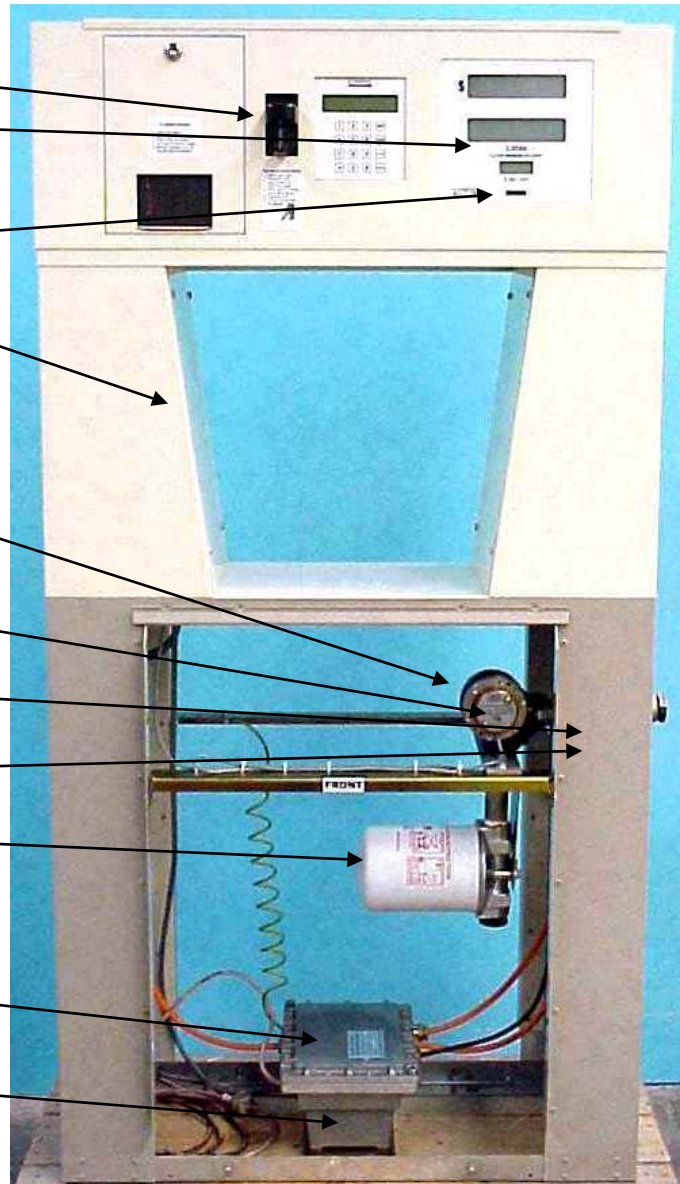
Solenoid complete (without coil)
F-SOLND-SS-3/4

Solenoid coil only
F-D-SCI08COIL10W

Filter Element (80 lpm)
F-FILTER-SE25

C4000 Power Supply
(does not include box)
F-CP-C4PWR-ASSEM

RS232 I/F PCB
F-CP-RS232-CI157T



Note: Aviation dispensers are now fitted with an all stainless steel solenoid.

- The inlet and outlet connections for these have changed from flanged to 1/2" NPT thread.
- A complete replacement solenoid (less the coil which available separately) is available as a spare part.
- A Diaphragm kit only is available from Compac on special order.

Part numbers

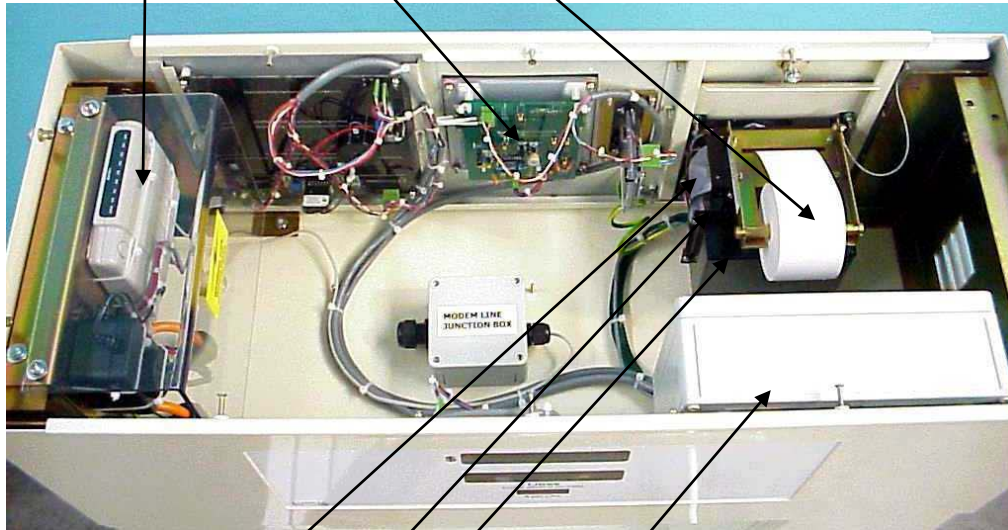
Solenoid complete (but without coil) F-SOLND-SS-3/4

Solenoid coil only F-D-SCI08COIL10W

Paper Roll
F-BA-PRTER-CK-RL

Serial Pinpad I/F board
F-PINPAD-INTGCKD

Modem
F-BA-MODEM-EXTAUS



Printer mechanism
F-BA-PRTER-SEI-M

Printer cutter mechanism
F-BA-PRT-SEIDCA

Printer Interface board
F-BA-PRT-SEI-I/F

Receipt Printer Power Supply
F-CP-RCPT-PRNPS-E