



Modem power adapter cables Technical Bulletin

Author: Andrew Kingstone
Date: 22/11/2010
Technical bulletin number: CTB1032
Version: 1.0

Background

Compac have used two different modems when manufacturing DCA's, OPT's and ComFutra equipment that use different style plugs to supply power. Because of this various adapter leads need to be used when replacing a modem in the field to enable a new modem to be used to replace an older version.

Note: The current modem being used in production is option 4 – A CallDirect modem with a small square power plug.

Modem identification

Two modem manufacturers have been used, CallDirect and Raven. There are sub-versions for NZ and AU use but for the purpose of power plug identification this has no effect. The CallDirect modem was supplied with three different power plug variants so there is a total of four possible modems you will encounter:

- 1) **Original CallDirect** – This can be identified by the round power plug.



- 2) **Second Generation CallDirect** – This has a LARGE square power plug

No photo available – If you have one in stock please send a photo to update this bulletin.

- 3) **Raven Modem** - This has a SMALL square power plug and is directly compatible with the CallDirect Small power plug modem (Option 4 below)



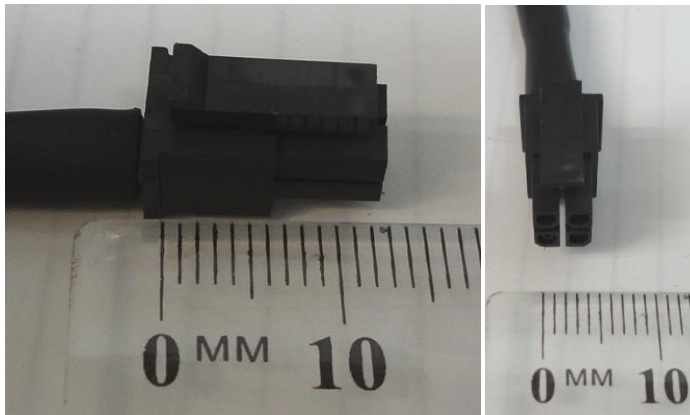
- 4) **Third Generation Call Direct** – This has a SMALL square power plug and two aerial connections (Only one is actively used)



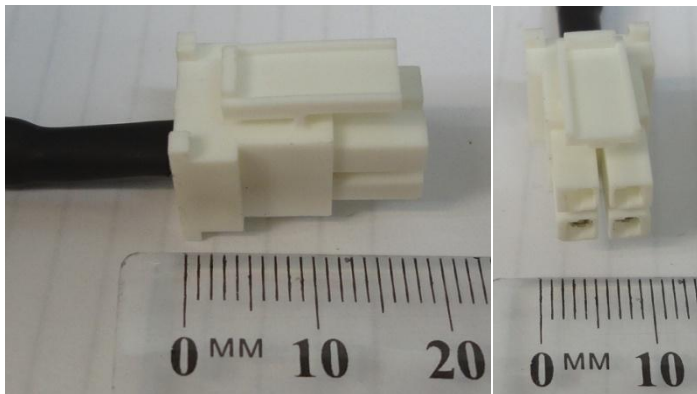
Plug identification

The way to identify the square plug is by their size as shown below:

- 1) Small Plug – 14mm x 5mm



- 2) Large plug – 20mm x 10mm



Adapter cables

Because there were three different power plug options, there are six adapter looms needed to cover all possible combinations. Depending on the units you are supporting you may only need to stock some of these parts, Please call the Compac Helpdesk and we will try to identify the most common combinations in your area. As a minimum, we suggest holding options 1 and 2 as this will adapt from the two older looms to the latest small square plug used in the current CallDirect modem spare part. The other cables are primarily used when installing an old spare part modem you may have in stock into a recently manufactured unit.

	Part Number	Description
1	F-BW-CBL-MDM006	Round socket to small square plug
2	F-BW-CBL-MDM002	Large square socket to small square plug
3	F-BW-CBL-MDM001	Small square socket to round plug
4	F-BW-CBL-MDM003	Large square socket to round plug
5	F-BW-CBL-MDM004	Small square socket to large square plug
6	F-BW-CBL-MDM005	Round socket to large square plug

Helpdesk Assistance

For any further queries regarding the above Service Advisory, contact the Compac Helpdesk on +64 9 579 1877 (Worldwide) or 1800 145 887 (Australia) helpdesk@compacngv.com